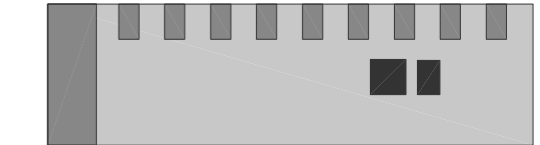
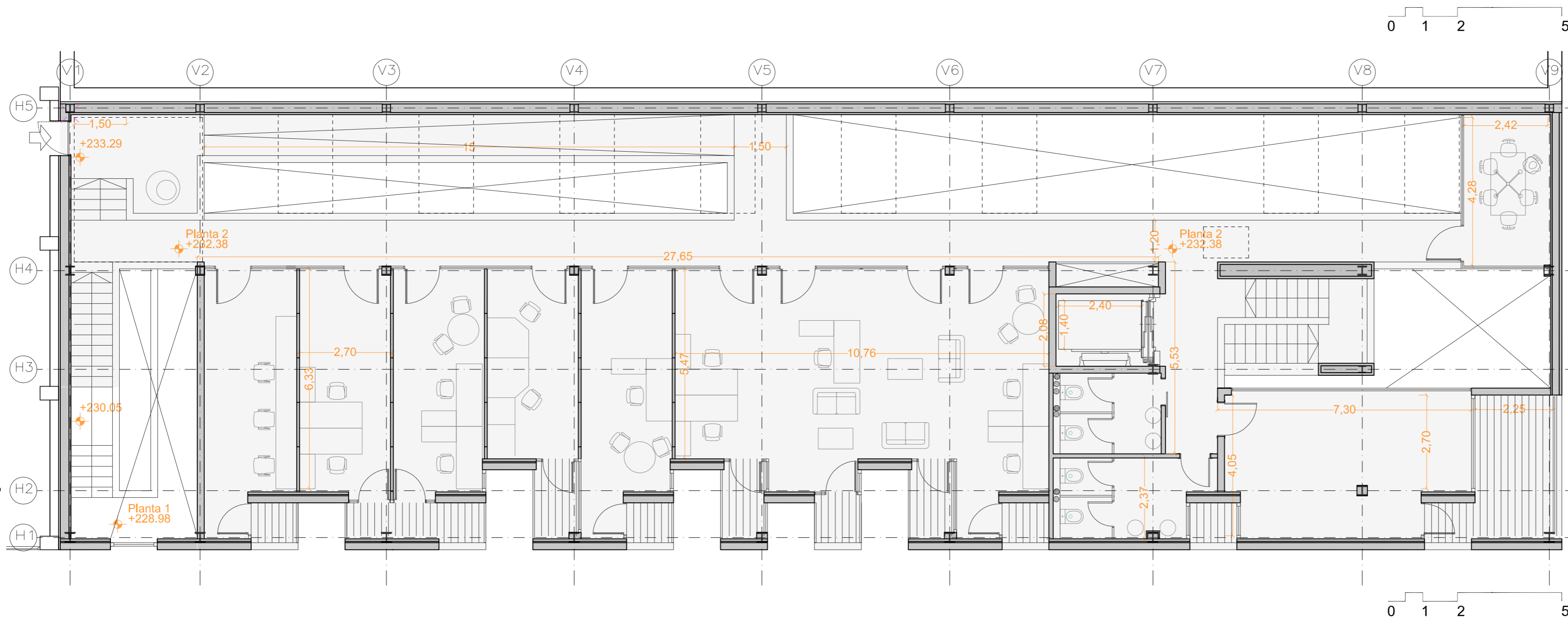




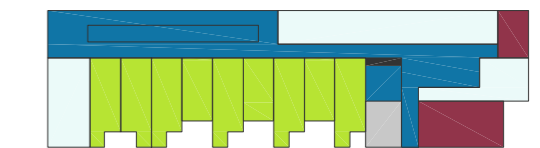
PROGRAM AND USE



- Covered in gravel
- Building facilities
- Vertical opening skylight

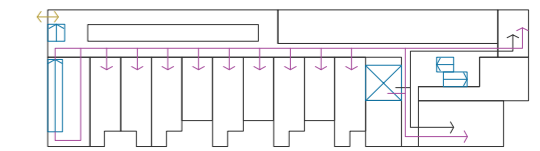


PROGRAM AND USE



- Workspace
- Circulation - Connection
- Common technical rooms
- Toilets
- Building facilities
- Empty space

LINK, CONNECTION AND CIRCULATION SPACES



- ↔ Connection with the existing building
- ↘ Public access - visits
- ← Visits circulation
- Entrance control - reception
- ⊠ Lift
- ⊞ Stairs
- ↗ Private access - staff
- ↖ Private / staff circulation

