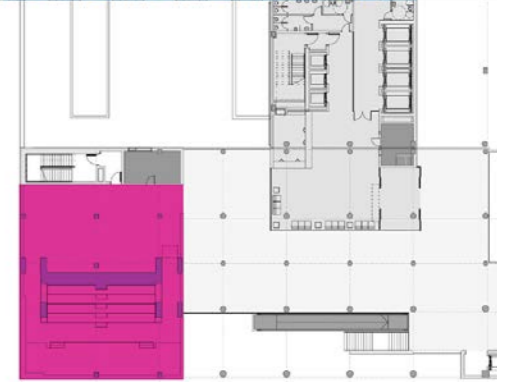
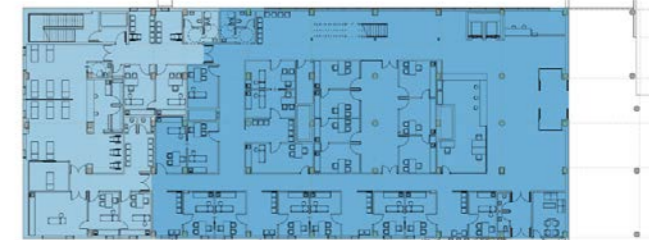
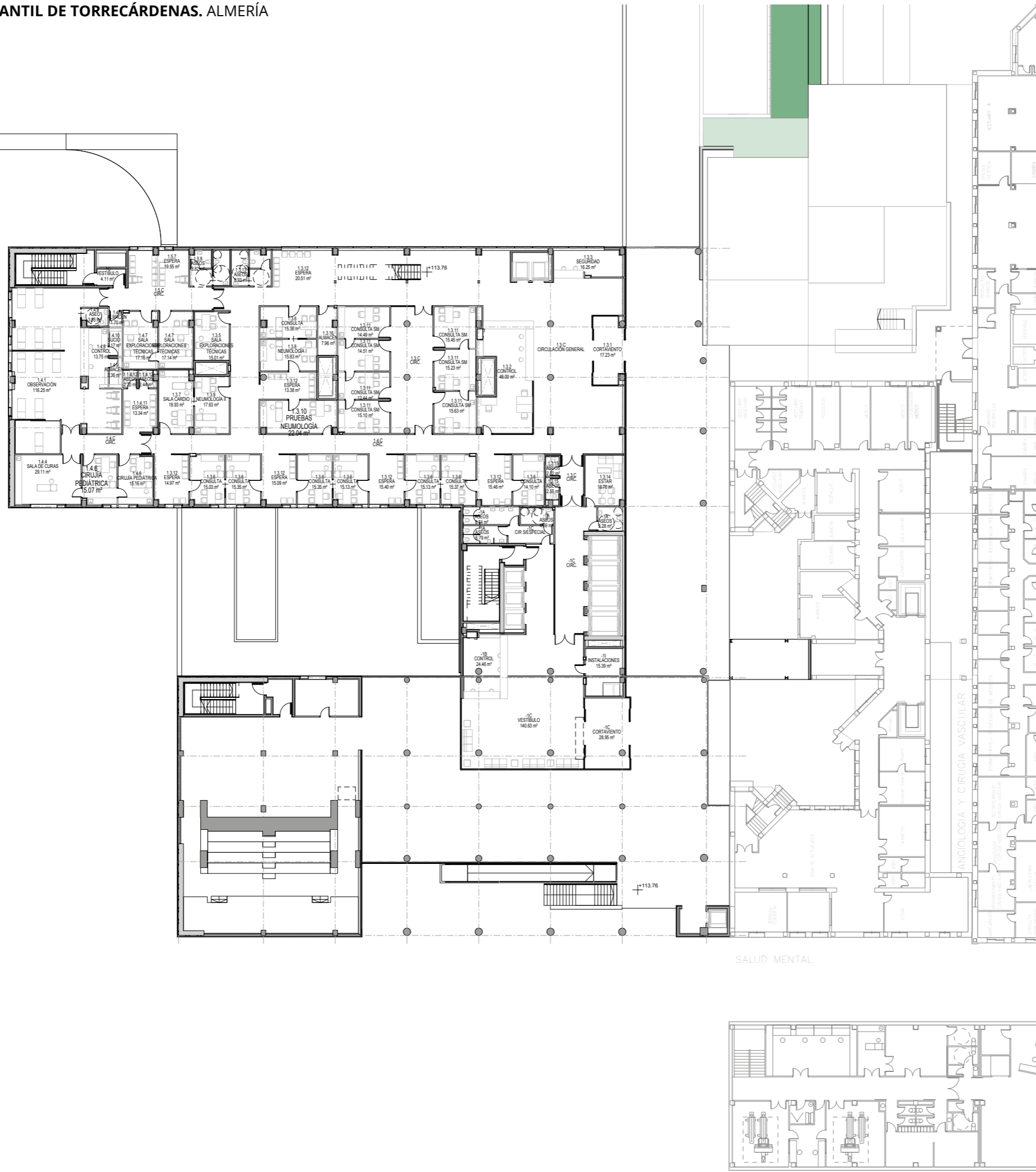
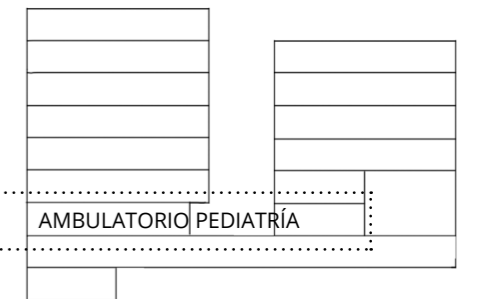


NIVEL -1 113.76 m

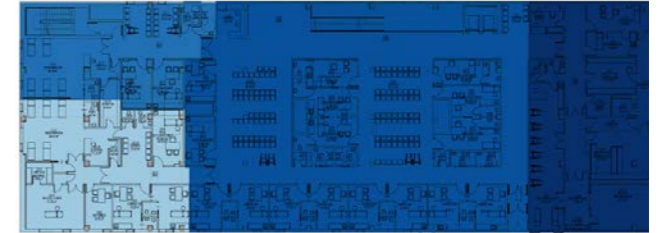
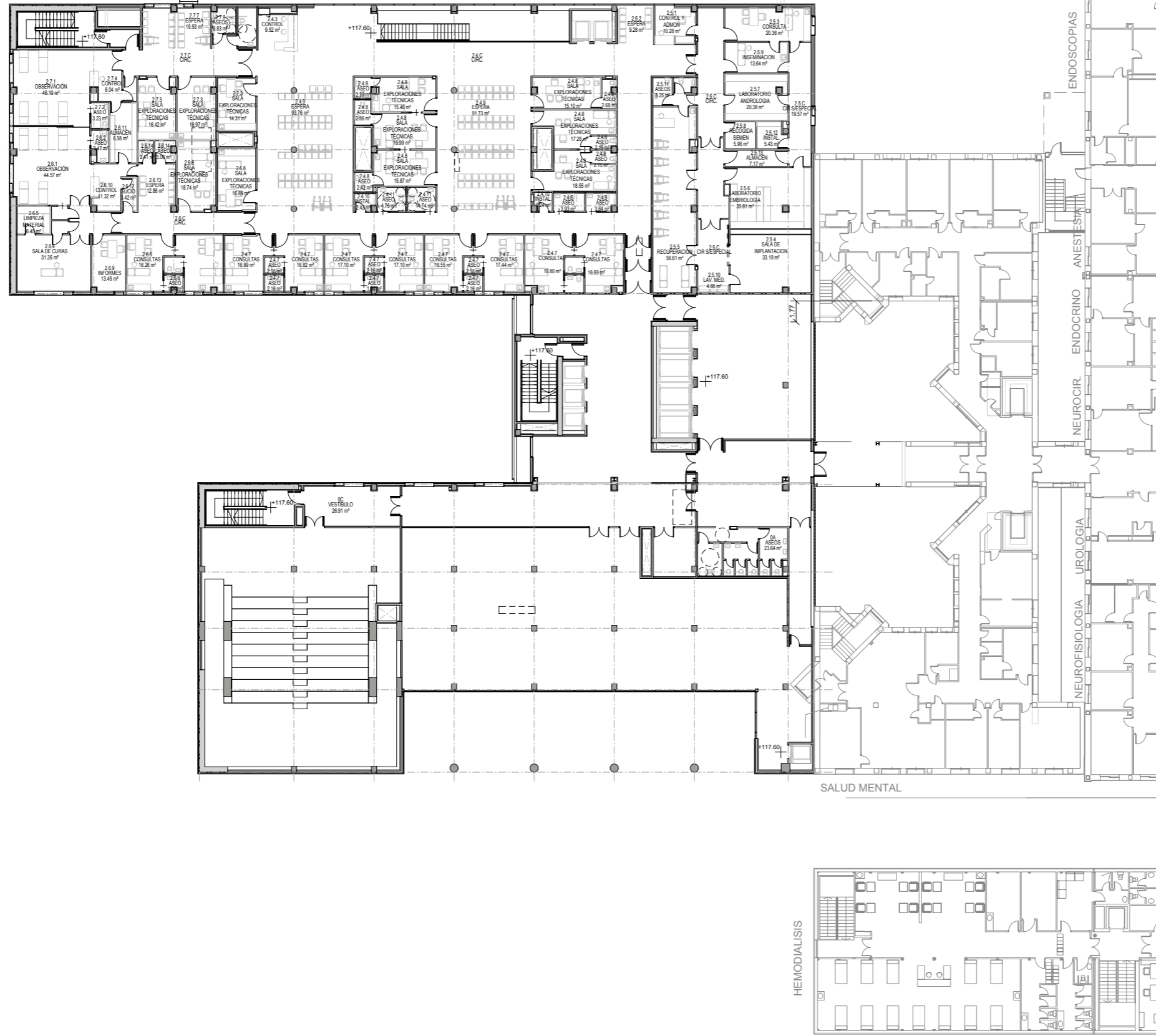


- CONSULTAS PEDIÁTRICAS
- H DÍA QUIRÚRGICO
- SALÓN DE ACTOS

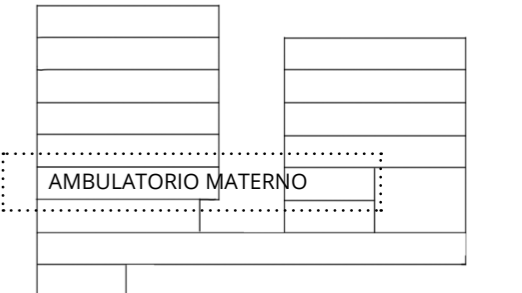


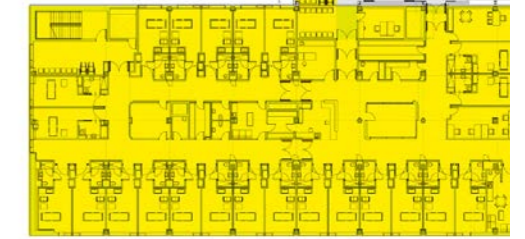
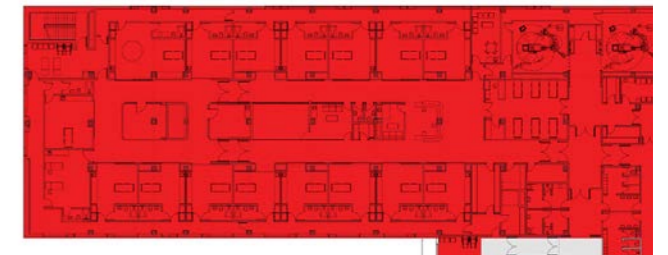
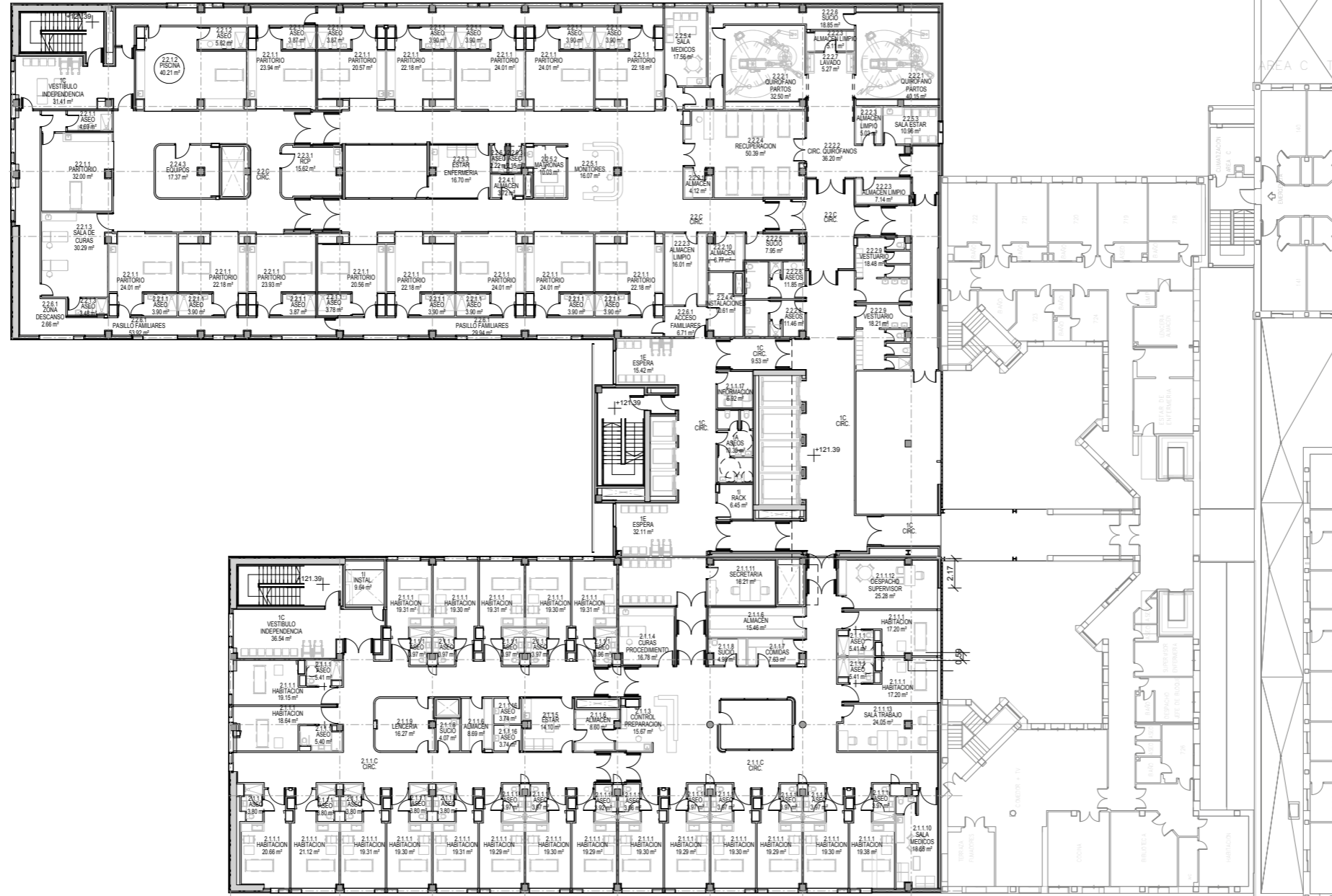
NUEVO HOSPITAL MATERNO- INFANTIL DE TORRECÁRDENAS. ALMERÍA

NIVEL +0 117.60 m

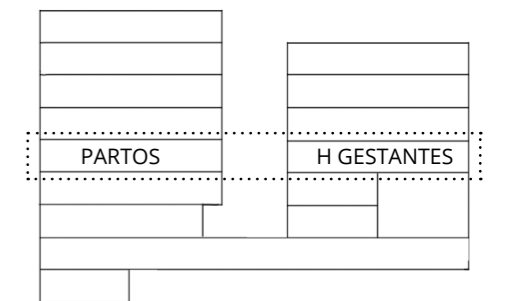


- FIV
- COSULTAS MATERNO
- H DÍA OBSTÉTRICO
- H DÍA MÉDICO-QUIRÚRGICO
- SALÓN DE ACTOS
- CAFETERÍA PÚBLICA

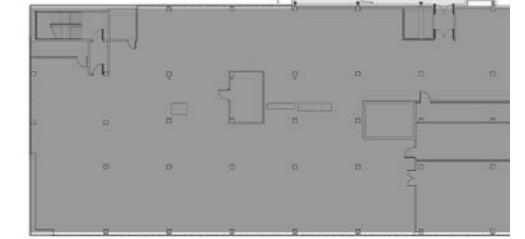
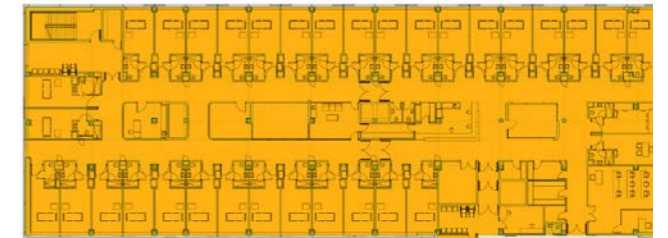
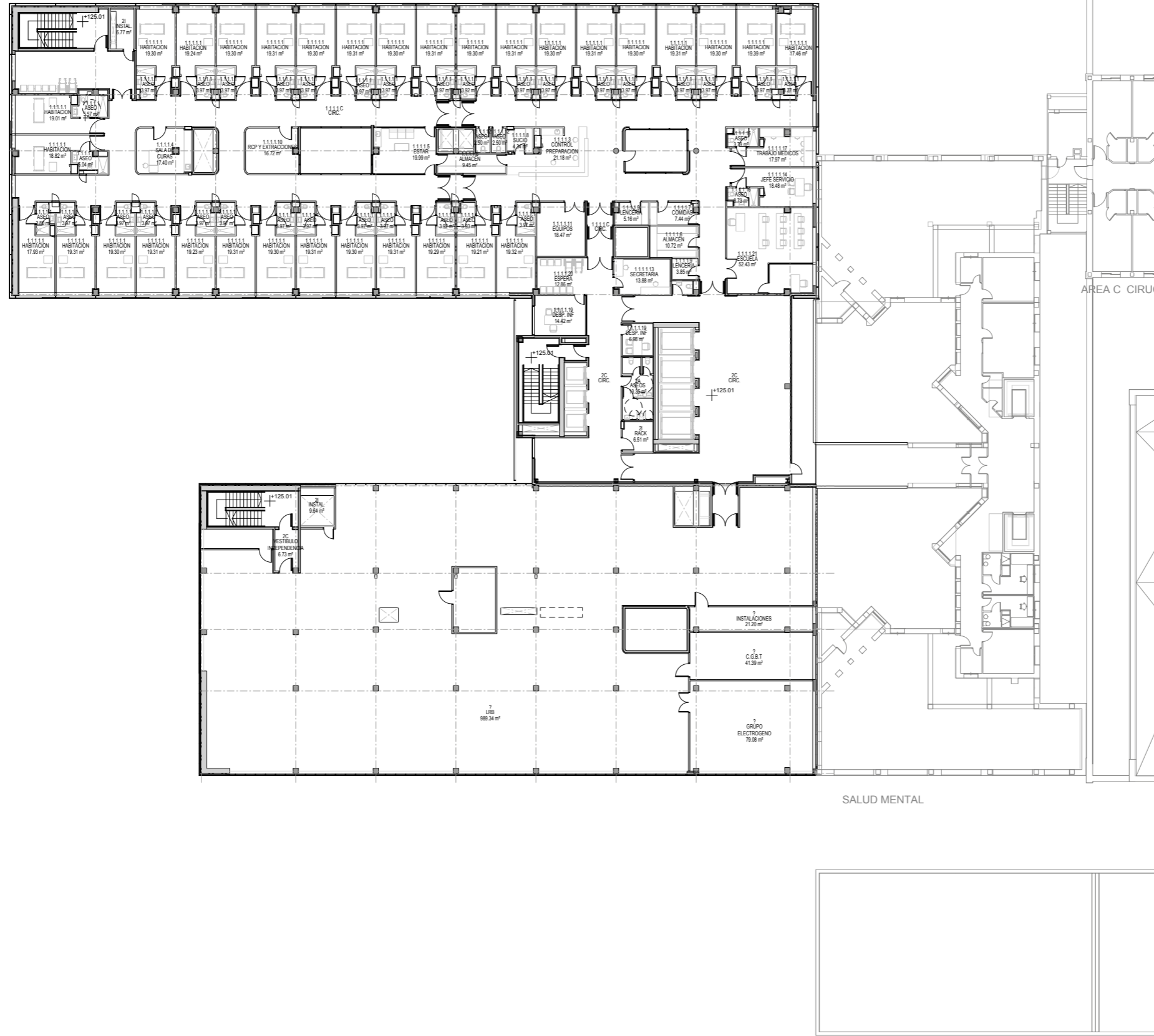




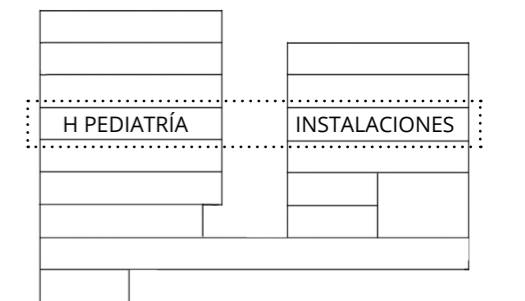
- ÁREA DE PARTOS
- HOSPITALIZACIÓN GESTANTES

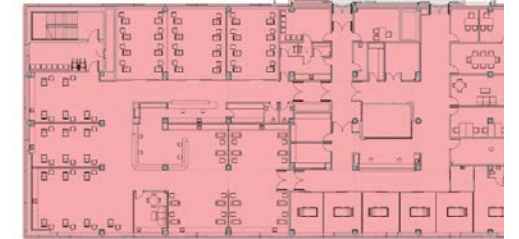
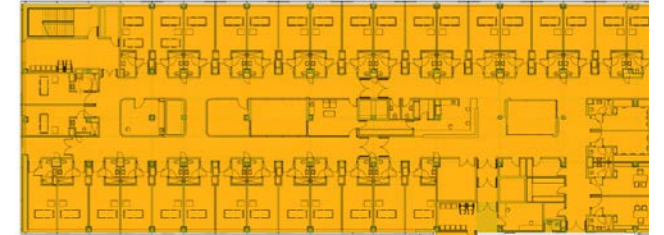


SALUD MENTAL

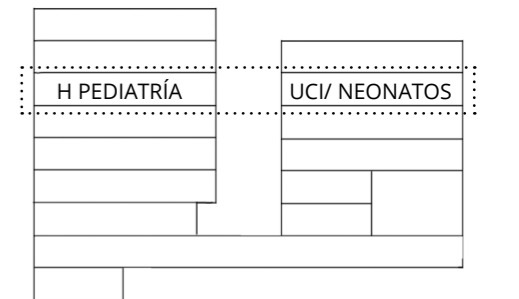


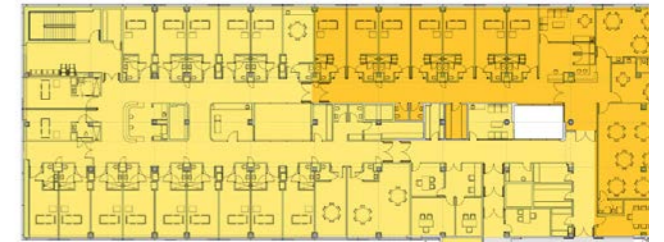
- HOSPITALIZACIÓN PEDIÁTRICA
- INSTALACIONES





- HOSPITALIZACIÓN PEDIÁTRICA
- UCI/ NEONATOS





- HOSPITALIZACIÓN ONCOLÓGICA
- HOSPITALIZACIÓN SALUD MENTAL

HOSPITALIZACIÓN	ZONA JUEGOS

NIVEL +6 139.49 m

